



Pioneers of Subsea Carrier-Neutral Colocation in Virginia Beach

Globalinx.....

**Building a Digital Network
of Carrier Neutral Data
Centers & Subsea Cable
infrastructure for Hampton
Roads**

Globalinx Data Centers

Committed to Creating a Telecommunications
Eco system for Virginia Beach for now and the future

Who are we ?

- *We are a locally owned and operated company, headquartered in Virginia Beach,
- *At a cost of over \$14,000,000, in 2019 Globalinx completed construction of the only Data Carrier Neutral Data Center in Virginia Beach, (in Corporate Landing Park) and is one of only two in Hampton Roads.
- *The Globalinx Data Center has now been in full operation for over two years, and has attracted a number of new Network Carriers now serving the Community, and is hosting in a secure environment a number of Virginia Beach's leading businesses for their Data backup needs, providing low latency and
- *An additional purpose of this initiative was to ensure Virginia Beach has access to ALL SubseaCables both present and the future. Globalinx has direct access to Telxius Marea, Brusa, and the Dunnant Subsea Cables.
- *With the completion of of the Sandbridge infrastructure and its new supporting Cable Landing Station, Globalinx will be ready to house an additional four Subsea Cable for Virginia Beach



How does Virginia Beach Benefit from additional Subsea Fiber Optic Cables?

*** An additional four Subsea Cables brings the total number of cables into Virginia , at seven
The most subsea cable of the Eastern Seaboard**

*** This creates a very viable technology hub which without a doubt will lead to the creation
of a large data center eco system , attracting the very best fortune 500 companies requiring
Low latency and high redundancy**

**• To date Globalinx has brought to Virginia Beach an additional four new carriers, the latest being
Shentel, West Virginias largest carrier , Their intentions are to provide competitive internet services for
Enterprise and private homes**

***Data Center attract high tax revenue for Municipalities, and the very best tech employment**

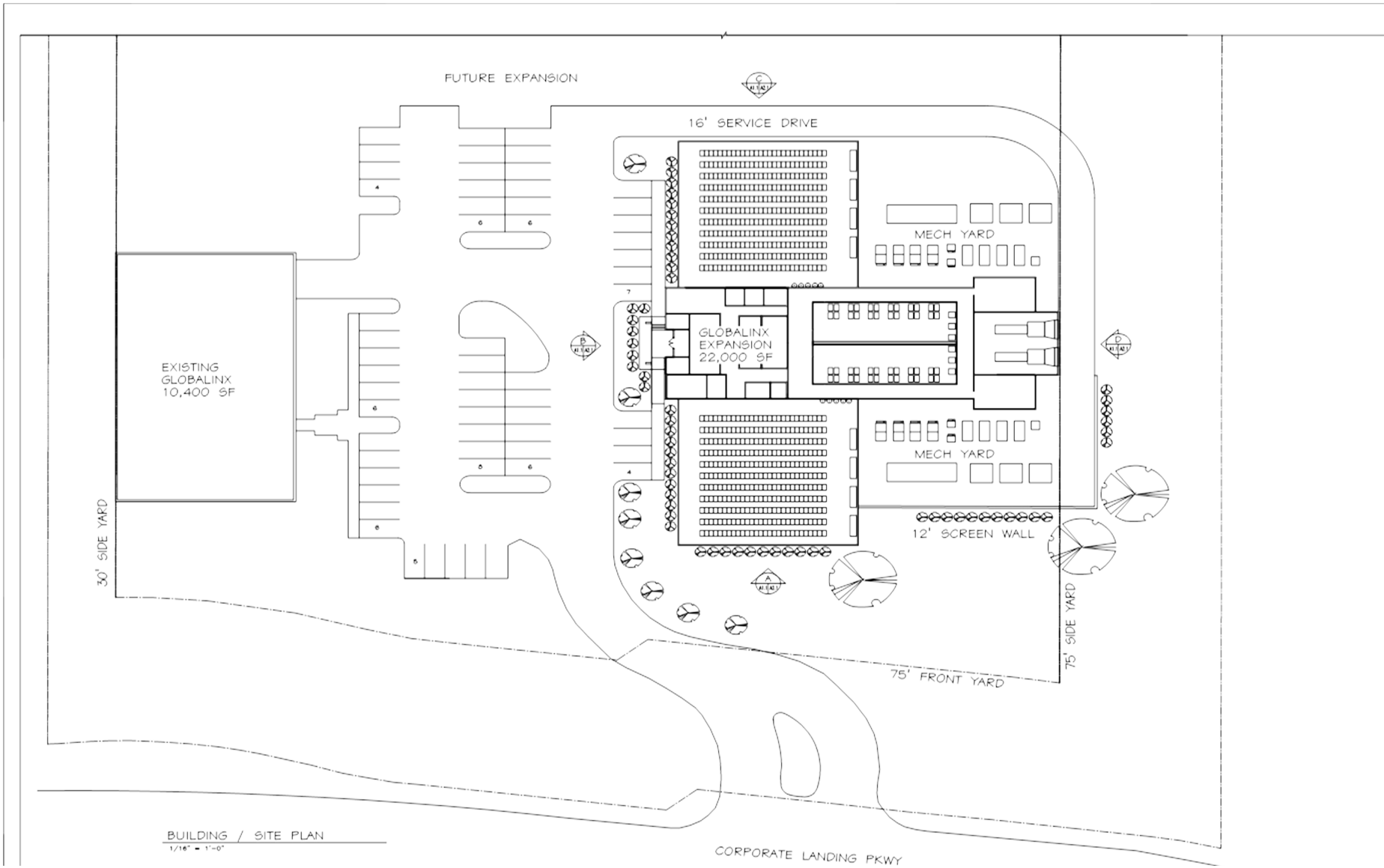
***When completed, Globalinx Capital investment in Virginia Beach will exceed \$70,000,000**

Globalinx 11.5 ACRES OF SUBSEA CARRIER NEUTRAL COLLOCATION



New Globalinx Cable Landing Station





BUILDING / SITE PLAN
 1/16" = 1'-0"

PROCESS PRINT
1-13-20

DATE	DRAWN BY	CHECKED BY	SCALE	SHEET NO.	TOTAL SHEETS

PROJECT NO.
2007
DATE
13 JAN 2008

GLOBALINX EXPANSION
 1632 CORPORATE LANDING PKWY
 VIRGINIA BEACH, VIRGINIA

PROPOSED BUILDING / SITE PLAN
 SHEET NO.

LEMOIRE
ARCHITECTS
 1632 CORPORATE LANDING PKWY
 VIRGINIA BEACH, VIRGINIA
 757-433-8811
 WWW.LEMOIREARCHITECTS.COM

SHEET NUMBER
 4 4

***The Build is for Four Subsea Conduits, allowing for another four Subsea Cables to come into Virginia Beach**

***To house these four new cables, Globalinx plans to construct a new Cable Landing Station building on the eleven acre Globalinx Campus in Corporate Landing Parkway for another Cable Landing Station**

***Totaling over 35,000 sft**

***The total combined cost: \$53,000,000**



Camp Pendelton

Currently we have a total of three subsea cables:
MAREA
BRUSA
DUNNANT

Globalink CLS

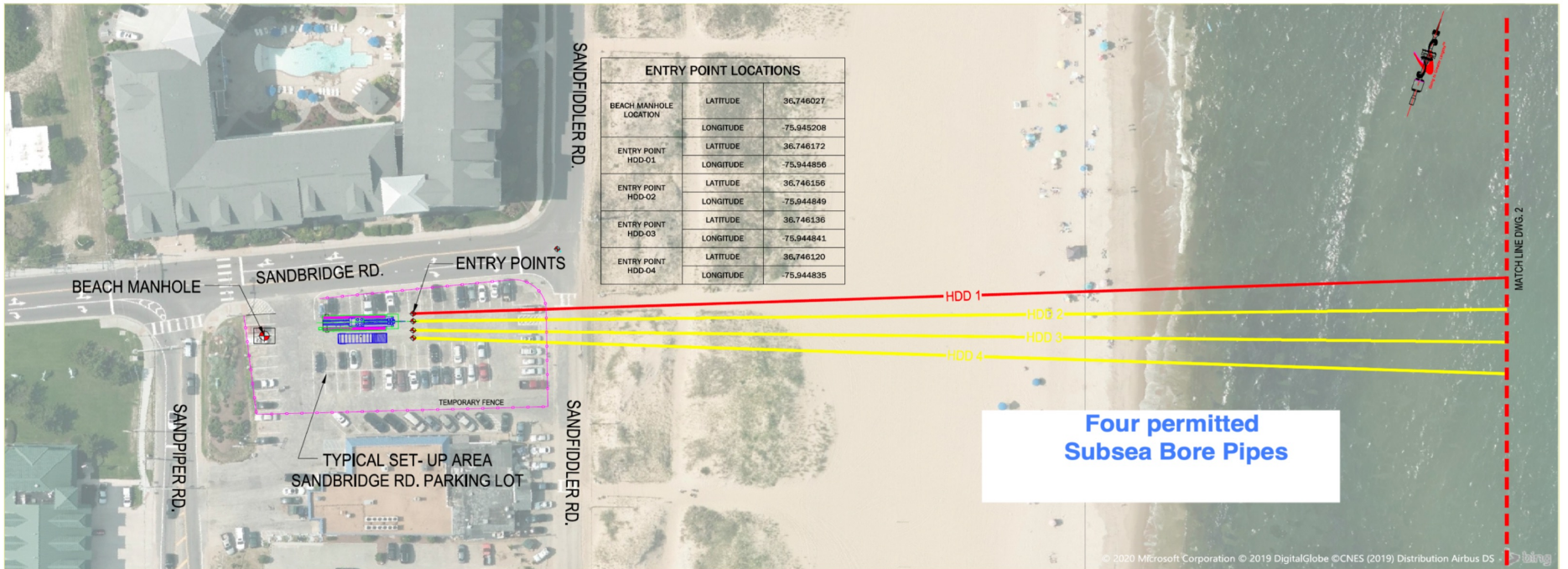
With the potential of an additional four subsea cables
Virginia beach will be in the forefront of the world stage
With great potential large Data Center growth

Sandbridge

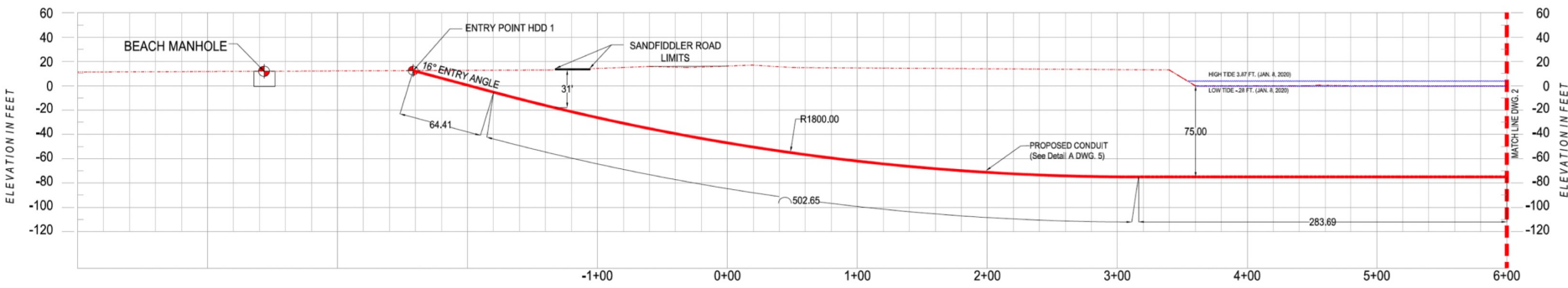


HORIZONTAL & VERTICAL
SCALE: 0 20 40 60 80 100
PLAN VIEW

FULL SCALE 1" TO 40'
HALF SCALE (11 X 17) 1" TO 80'



HORIZONTAL & VERTICAL
SCALE: 0 20 40 60 80 100
PROFILE VIEW



NOTES:
1. HORIZONTAL DISTANCE IS THE DISTANCE FROM ENTRY POINT TO EXIT POINT.
2. ALL DISTANCES AND ELEVATIONS ARE APPROXIMATE AND FOR INFORMATION ONLY.
3. CURVE DISTANCE IS THE ACTUAL DISTANCE OF THE PLANNED CROSSING.
4. ALL DIMENSIONS TO CENTERLINE OF PIPE AS SHOWN.

IMPORTANT:
ANY DRILLING PLANS OR PROFILES SUBMITTED BY THE HDD COMPANY ARE BASED UPON THE DESIGN INFORMATION IN THE CONTRACT DOCUMENTS AND UPON THE HDD COMPANY'S KNOWLEDGE AND EXPERIENCE IN ADDITION TO ITS OPERATIONAL EXPERTISE OVER THE PAST THREE DECADES. HOWEVER, THE HDD COMPANY AND ITS PERSONNEL ARE NOT ENGINEERS. THEREFORE, ANY SUCH PLANS OR PROFILES SUBMITTED BY THE HDD COMPANY ARE SUBJECT TO REVIEW AND APPROVAL BY THE OWNER AND/OR

R	DATE	REVISION DESCRIPTION	VERTICAL CURVE DATA
1	8 Jan. 20	REVISED DRAWING TO 11 X 17 SCALE	16.00' 12.00'
2	28 Feb. 20	MOVE ENTRY POINTS TO SANDBRIDGE RD. PARKING LOT	57.87' 38.85'
			1800' 1800'

STATIONS AND ELEVATIONS		PROJECT INFORMATION	
ENTRY POINT		PROJECT NO.	02106A-VIRGINIA BEACH
PC-1		DATE	20 FEB. 2020
PE-1		CLIENT	globalinx
PC-2		OWNER	globalinx
		LAB	DISCUSSION ONLY
		FOR CONSTRUCTION	
		AS-BUILT	

THE HDD COMPANY
4335 BERNARD PARKWAY, SUITE 210
EL DORADO HILLS, CA 95762
PHONE: (530) 876-9700
FAX: (530) 876-3606

CLIENT: globalinx
OWNER: globalinx
GLOBALINX SUBSEA COLOCATION
GLOBALINX SUBSEA COLOCATION
VIRGINIA BEACH FIBER OPTIC CABLE LANDING

Globalinx Overview



The important things to note are :

- *Our conduit construction is totally nonintrusive, and is NOT at any stage open trench . It is totally directional deep drilling both in the water and the land run from Sandbridge to Corporate landing Data Center. There is no open Trenching of the conduits .**
- * During our construction during the winter off season months, there is no disturbance on the beach, in fact drilling is at least 50 feet under ground base finishing three quarters of a mile in the ocean.**
- * For the Land run to Corporate Landing, leaving Sandbridge, it is a considerable distance North of the proposed new Sandbridge Road, designed as the alternate route as planned by City Engineers & Kimberly Horne.. 4 x 4 inch standard. All underground directional drilled.**

All Underground Drilling-Very Minimal Construction Impact

*On completion of the project the only evidence of the work in the parking lot will be standard utility manholes visible in the parking lot.

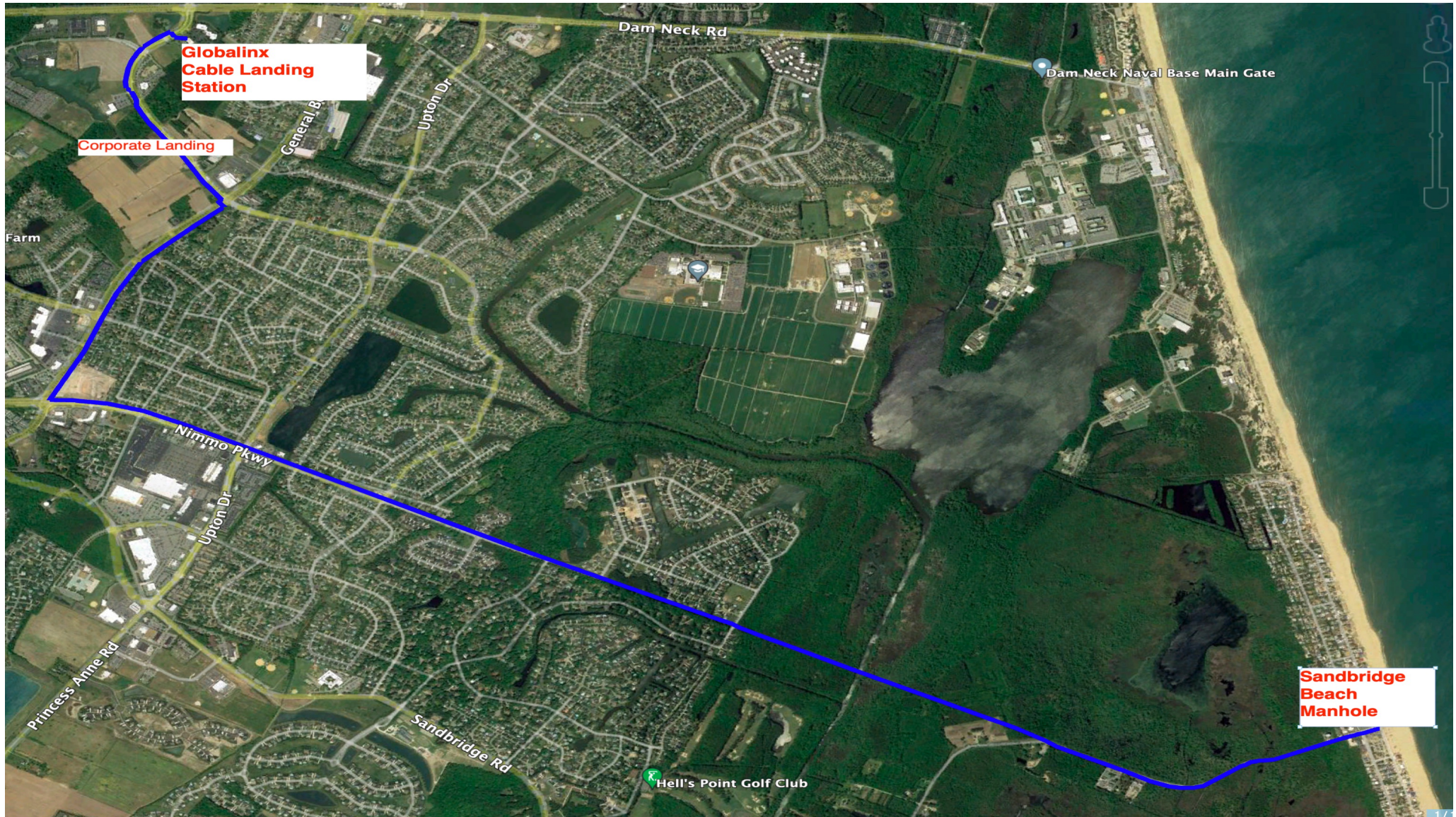
*With our existing, Permit we have Army Corps of Engineers 408 and National Wide 12, DEQ approvals, and for the new revised approval, since it is a slight modification, we expect to receive the same approvals .

*There is minimal interference with vegetation, fishery and wildlife , and in the built-up areas there is little disturbance and disruption,

Timing

*All work from the water to the parking lot landing BMH (beach manhole) will be undertaken in off season (winter) over a period of no more than two and a half months. With no impact to traffic at any time.

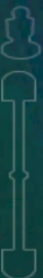
*The work from the BMH to the Cable Landing Station will take approximately 6 months



**Globalinx
Cable Landing
Station**

Corporate Landing

**Sandbridge
Beach
Manhole**





Globalinx Virginia Beach Data Center in Operation

Globalinx Phase one Starline A+B.
Busway

Tier 3 Up Time equivalent

A full 2 N+1 Data Center , one of a
handful in the State of Virginia

Completed and fully operational in
2019

Two years running at 100% Uptime!

In 2021 Full 100% completed
infrastructure buildout at 2.5 mgw

Housing Network Carriers

Leading Local Businesses Secure Server
Hosting and Managed Services





We provide
Tech workspaces
For our guests



Current completed Fiber infrastructure

*Two diverse conduit systems consisting of 8 conduits along each North and South side of Corporate Landing Pkwy connecting globalinx to Telxius.

*Conduit and dark fiber network owned and operated by globalinx.

* 2 X 864 diverse fiber network connecting globalinx to Telxius.

* 2 X 434 diverse fiber networks from end to end in Corporate Landing constructed for Globalinx Customers use.

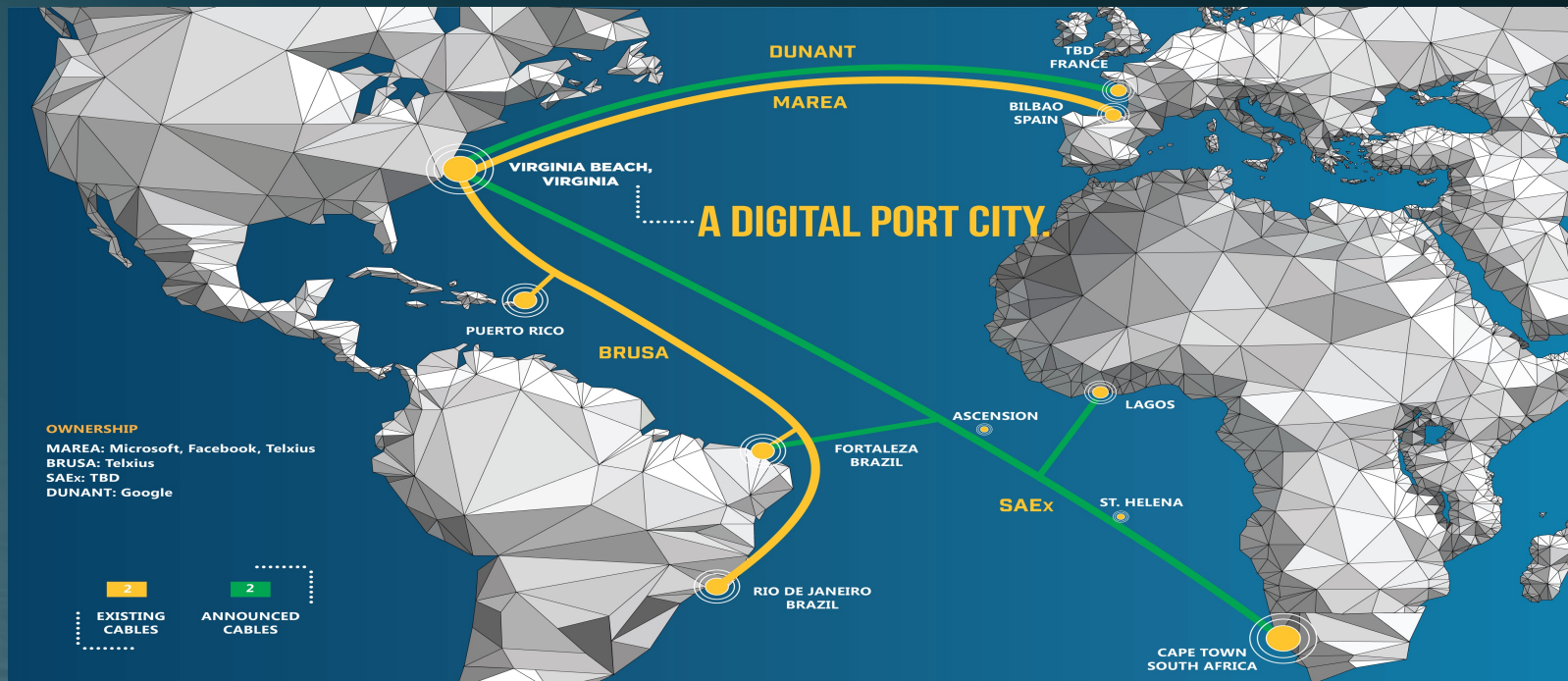
*Future available subsea cable conduit system along Dam Neck connecting to Camp Pendelton & Sanbridge landings.

*Globalinx tenants are a simple cross connect away from BRUSA MAREA & DUNANT Sub Sea Cables



*Globalinx partnership with Telxius will host a new digital hub location for enterprises, OTT's, and carriers to connect via a cross connect from globalinx extensive diverse 864 fiber network connecting globalinx campus to Telixus CLS.

*Globalinx campus is connected to two diverse terrestrial subsea landing routes consisting of Camp Pendelton where MAREA BRUSA & Googles Dunnant *Globalinx 11.5 acres is the ONLY hardened structured carrier neutral data center facility in Virginia Beach which is readily available for tenants to extend their global reach into South & Latin America, Carribean, Spain and Europe. And of course North America



Current Globalinx Carriers
Bringing better lowest latency, fully redundant broadband
Connectivity to Virginia Beach

LUMEN®



SEGRASM

Pioneers of Subsea Carrier Neutral Colocation in Virginia Beach





globalinx
subsea colocation

Pioneers of Subsea Carrier-Neutral Colocation in Virginia Beach

Contact for inspection

dan.van@globalinxdatacenters.com

greg.twitt@globalinxdatacenters.com

Thank You!